

2018-2019

Annual Report

&

2020 Calendar

July 1, 2018-June 30, 2019

89 Alder Street
Central Point, OR 97502
541-423-6159

jswcd.org

About our Board

The Oregon Department of Agriculture has identified five District Zones within Jackson County. Each Zone has one board representative, with two *At Large* Directors. Board members must be residents of Jackson County and are elected by Jackson County voters every four years. Board members must be registered voters in Jackson County.



Stan Dean
At Large



Jaunita Wright
Zone 3



Dave Picanso
Zone 1



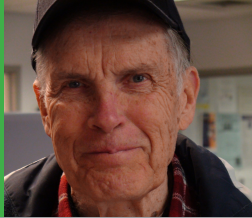
Ron Hillers
Zone 5



Don Hamann
Zone 4



Barbara Niedermeyer
Vice-Chairman
Zone 2



Allan Campbell
Chairman
At Large

Our Staff



Randy White
District Manager



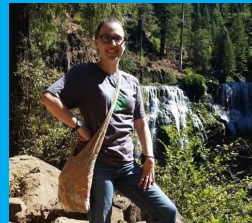
Markie Germer
Administrative Specialist



Paul DeMaggio
Soil & Water Conservation Engineer



Clint Nichols
Forest & Riparian Conservationist



Kora Mousseaux
Community Water Resource Conservationist



Jenna Sanford
Stewardship Monitoring Coordinator



Karelia Ver Eecke
Education & Outreach Coordinator



Trevor Morris
Office Assistant & Natural Resource Technician

Year End Financial Statement Fiscal Year Ending June 30, 2019 Statement of Activities-Cash Basis Receipts of Income

Property Taxes	\$1,002,709
Oregon Department of Agriculture Grant	\$78,488
Tours, Workshops, Classes Tuition/Fees	\$5,015
Interest	\$29,214
Grant Revenue	\$329,861
Lease Revenue	\$29,255
Miscellaneous	\$3,725
Total Receipts	\$1,478,267
Disbursements	
Personnel Services	\$537,427
Materials & Services	\$753,792
Capital Outlay	\$9,519
Total Disbursements	\$1,300,738
Balance of Receipts over Disbursements	\$177,529
Change in net position-cash basis	\$981,982
Beginning of Fiscal Year	\$981,982
End of Fiscal Year	\$1,159,511



Throughout the irrigation season we monitor the water quality and quantity of Antelope Creek for 10 indicators, including *E. coli*, dissolved oxygen, temperature, and stream flow. These data are used to evaluate stream health and track changes related to the RRVID Hopkins Canal Piping Project and associated Irrigation Conversion Projects.

January

Quick Facts:

- 3 sampling locations on Antelope Creek, 1 sampling location on Yankee Creek
- Sampling season runs April-October

Sunday	Monday	Tuesday	Wednesday	Thursday	Friday	Saturday
			1 New Year's Day	2	3	4
5	6	7	8	9	10	11
12	13	14 Little Antelope Creek Community Open House 7pm	15	16	17	18
19	20 MLK Day	21	22 JSWCD Board Meeting	23	24	25
26	27	28	29	30	31	



Through our District’s low-cost Equipment Rental Program, we’re able to help Jackson County residents improve their stewardship practices and become better land managers. Above, Bee Girl’s Sarah Red-Laird takes our new *Dew Drop* no-till drill for its first field run in her Regenerative Bee Pasture.

February

Quick Facts:

- We have a variety of equipment available for rental.
- Most equipment is fully-booked in the spring and fall so...
- Call 541-423-6167 to get your name on the list!

Sunday	Monday	Tuesday	Wednesday	Thursday	Friday	Saturday
						1
2 Groundhog Day	3	4	5	6	7	8
9	10	11	12	13	14 Valentine’s Day	15
16	17 President’s Day	18	19 JSWCD Board Meeting	20	21	22
23	24	25	26	27	28	29



The Middle Rogue Pesticide Stewardship Partnership (PSP) is part of a state-wide effort to monitor water quality for pesticides by collecting water samples and measuring flow. Sampling occurs February-June and July-October.

Quick Facts:

- 6 primary sampling areas: Jackson Creek (multiple sites), Wagner Creek, Payne Creek, & Larson Creek
- Jackson County PSP sampling began in 2014

March

Sunday	Monday	Tuesday	Wednesday	Thursday	Friday	Saturday
1	2	3	4	5	6	7
8 Daylight Savings Starts	9	10	11	12	13	14
15	16	17	18 JSWCD Board Meeting	19	20	21
22	23	24	25	26	27	28
29	30	31				



Pre-Project



Post-Project



Mid-Project

Riparian restoration is the process of removing non-native plants like Armenian blackberries and replacing them with native plants like willow, big-leaf maple, wood rose, and Oregon grape to provide a more complex habitat for wildlife, reduce erosion, and provide shade to cool water for our native anadromous fish, including steelhead, coho salmon, and Pacific lamprey.

April

Quick Facts:

- The Karn's Project, shown above improved 1 acre of near-stream habitat on Anderson Creek
- We have a Riparian Restoration Rebate program for landowners

Sunday	Monday	Tuesday	Wednesday	Thursday	Friday	Saturday
			1	2	3	4
5	6	7	8	9	10	11
12	13	14	15	16	17	18
Easter			JSWCD Board Meeting			
19	20	21	22	23	24	25
	Day Camp Registration Opens		Earth Day			
26	27	28	29	30		



Working with landowners to reduce fire-fuel loads is a priority of JSWCD. Together with landowners Fred Gebhart & Maxine Cass and the Oregon Department of Forestry we improved 10 acres of forest through fuels reduction, invasive plant removal, and native plant planting.

May

Quick Facts:

- 12% reduction in trees/acre, reduced wildfire hazard
- \$38,000 total project cost (\$18k landowner match, \$10k JSWCD cost-share, \$20k cash costs (not including \$6.6k for ODF crew))

Sunday	Monday	Tuesday	Wednesday	Thursday	Friday	Saturday
					1	2
3	4	5	6	7	8	9
10 Mother's Day	11	12	13	14	15	16
17	18	19	20 JSWCD Board Meeting	21	22	23
24	25 Memorial Day	26	27	28	29	30
31						



Site before treatment: overcrowding, dense small diameter trees



Join us for our Forest & Range Day Camp for hands-on natural resource fun! Meet local professionals, make new friends, and find all sorts of critters!

June

Quick Facts:

- 40 campers, 5 days, \$50
- Meet local professionals
- Learn something new, make new friends, and have fun!

Sunday	Monday	Tuesday	Wednesday	Thursday	Friday	Saturday
	1	2	3	4	5	6
7	8	9	10	11	12	13
14 Flag Day	15	16	17 JSWCD Board Meeting	18	19	20
21 Father's Day	2020 Forest & Range Day Camp					27
28	29	30				



July is smart irrigation month. Above, Bobby Barber demonstrates some of the tricks of proper flood-irrigation technique. Thirty landowners attended our *Flood Irrigation Done Right* class in June 2019.

July

Quick Facts:

- Reduce & improve your residential irrigation use by following a watering schedule, contact local municipalities for assistance
- For larger agricultural operations, get to know your Irrigation District!

Sunday	Monday	Tuesday	Wednesday	Thursday	Friday	Saturday
			1	2	3	4 Independence Day
5	6	7	8	9	10	11
12	13	14	15 JSWCD Board Meeting	16	17	18
19	20	21	22	23	24	25
26	27	28	29	30	31	

JSWCD's Soil & Water Conservation Engineer, Paul DeMaggio can assist you with irrigation questions and help you optimize your practices to save money, time, and water.

Call 541-423-6179





In July 2018, a human-caused fire burned 123 acres just outside of downtown Central Point. The fire started along the Bear Creek Greenway, jumped Bear Creek and reached through blackberry and nearby fields. Above, Lomakatsi Restoration Project's crew installs willow mattresses to reduce erosion and help stabilize the banks of Bear Creek.

August

Quick Facts:

- 31 of the 123 acres burned, were near-stream habitat
- \$88K has been committed in cash and in-kind labor
- 200+ local students visited site in fall 2018

Sunday	Monday	Tuesday	Wednesday	Thursday	Friday	Saturday
						1
2	3	4	5	6	7	8
9	10	11	12	13	14	15
16	17	18	19 JSWCD Board Meeting	20	21	22
23	24	25	26	27	28	29
30	31					



The fire site, 8 weeks post -fire.



Hemp was Jackson County’s cash crop in 2019, with 8,578.9 acres in production, making it the largest ag crop in the Rogue Valley.

September

Quick Facts:

- The 2018 Farm Bill made hemp a legal agricultural commodity across the nation
- Most hemp grown in Oregon is going to markets elsewhere in the country

Sunday	Monday	Tuesday	Wednesday	Thursday	Friday	Saturday
		1	2	3	4	5
6	7 Labor Day	8	9	10	11 Patriot Day	12
13	14	15	16 JSWCD Board Meeting	17	18	19
20	21	22	23	24	25	26
27	28	29	30			

For more information on hemp in Oregon visit Oregon.gov and search for “Hemp Program” under “Programs.”



With the change of seasons fully upon us in October, use this as a time to reset any practices that might negatively impact water quality. Consider: planning and planting a rain garden to reduce your landscape's water needs; finally covering that manure pile; and rather than blowing or raking your leaves into the gutter, bagging them or mulching them for your garden.

Quick Facts:

- Water quality is one of the major drivers of the District's work.
- Water Quality Concerns are not limited to ag only, urban yards can negatively impact as well. Know your impacts.
- Our waterways are a major contributor to quality of life, economy, and wildlife diversity.

October

Sunday	Monday	Tuesday	Wednesday	Thursday	Friday	Saturday
				1	2	3
4	5	6	7	8	9	10
11	12	13	14	15	16	17
18	19	20	21 JSWCD Board Meeting	22	23	24
25	26	27	28	29	30	31 Halloween

Pre-Project



Post-Project



The Neil Creek Strategic Implementation Area was established in 2017 to improve water quality in Neil Creek, a tributary to Bear Creek. Equamore Horse Sanctuary was one of our primary collaborating land owners to improve water quality. We have just completed, along with help from Rogue River Watershed Council, a manure storage facility designed to manage 1.3 MILLION POUNDS of horse manure!

Quick Facts:

- Constructed a 40' x 84' covered manure storage facility
- Installed 170' of vegetative filters strips to clean run-off before entering Neil Creek

November

Sunday	Monday	Tuesday	Wednesday	Thursday	Friday	Saturday
1 Daylight Savings Ends	2	3	4	5	6	7
8	9	10	11 Veteran's Day	12	13	14
15	16	17	18 JSWCD Board Meeting	19	20	21
22	23	24	25	26 Thanksgiving	27	28
29	30					



The completed facility in October 2019. \$112,152 worth of funding from OWEB and JSWCD made this project possible.



And of course, nothing would get done if we didn't have a little fun along the way! We're happy to share our office space and projects with some excellent partners from Rogue River Watershed Council, Farm Service Agency, Rogue Valley Council of Governments, Rusted Gate Farm LLC, and many others. And of course, Jackson County Residents!

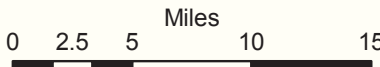
December

Sunday	Monday	Tuesday	Wednesday	Thursday	Friday	Saturday
		1	2	3	4	5
6	7	8	9	10	11 Hanukkah	12
13	14	15	16 JSWCD Board Meeting	17	18	19
20	21	22	23	24	25 Christmas	26
27	28	29	30	31 New Year's Eve		

District Zones

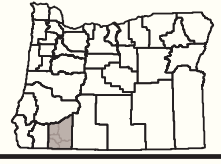
Jackson Soil and Water Conservation District

Jackson County, Oregon
1:470,000



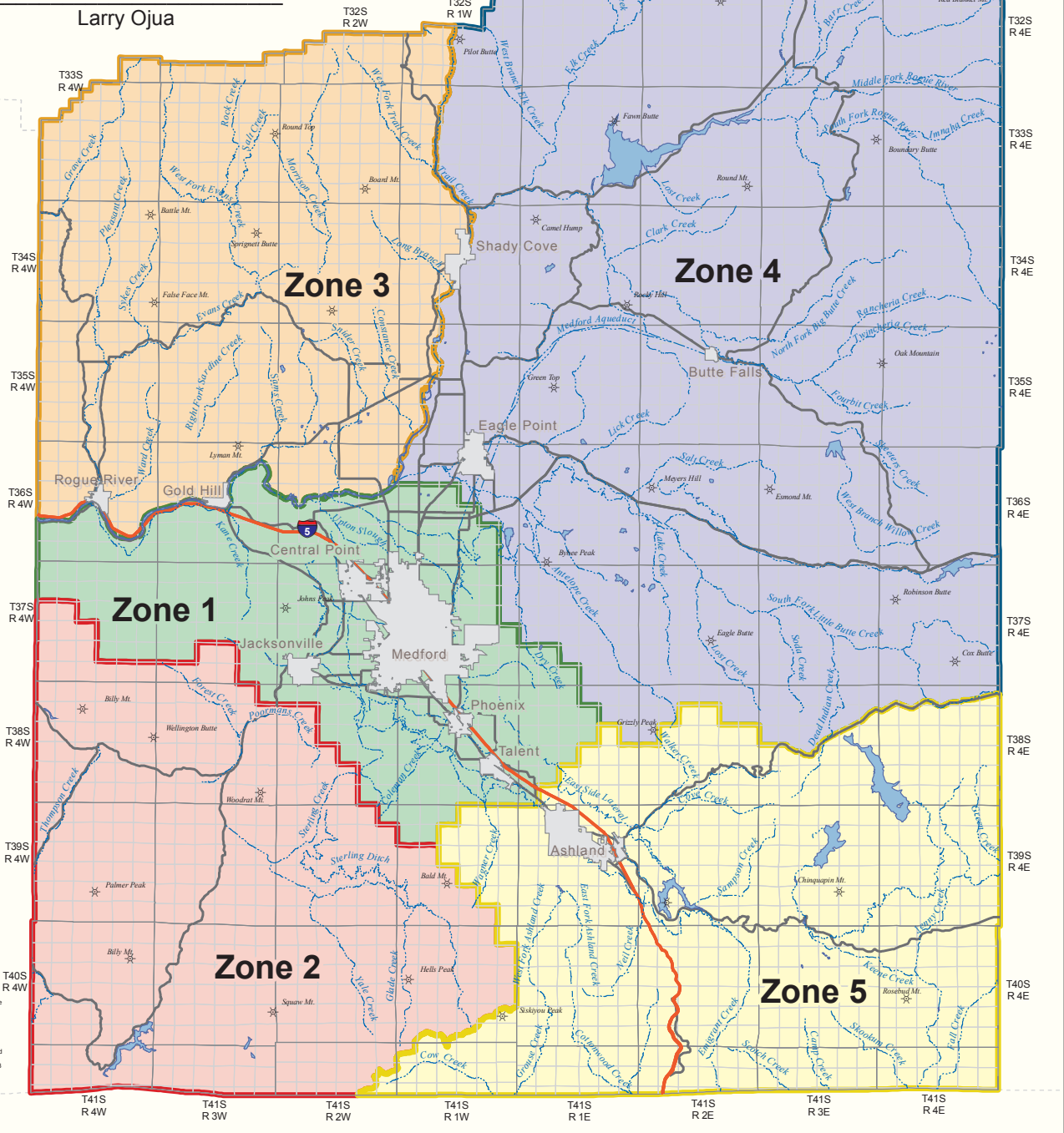
Legend

- * Summit
- Stream
- Interstate
- Hwy/Road
- Urban
- Lakes
- Section
- TownRange



Date: _____
Signature: _____

Larry Ojua



Klamath Co.

T30S R 4E

T31S R 4E

T32S R 4E

T33S R 4E

T34S R 4E

T35S R 4E

T36S R 4E

T37S R 4E

T38S R 4E

T39S R 4E

T40S R 4E

T41S R 4W

T41S R 3W

T41S R 2W

T41S R 1W

T41S R 1E

T41S R 2E

T41S R 3E

T41S R 4E

California

This product is for informational purposes and may not have been prepared for, or be suitable for, legal, engineering, or surveying purposes. Users of this information should review or consult the primary data and information sources to ascertain the usability of the information.

Document: G:\src\jackson\jacksonFinal.mxd
07/24/09, Joseph W. Hayes
Projection: Oregon Lambert Projection NAD 83
Central Meridian: -122.90 Degrees